

Important Habitats in BCR 13

What are they?

Where are they?

How specific should we get?



BCR 13 All bird meetings, 2001

Landbird Habitats

Highest Priority Habitats:

- Grassland
- Shrub / early Successional
- Deciduous Forest

Other Important Habitats:

- Open Water
- Emergent Marsh
- Mixed Forest
- Artificial Cover
- Fen/Bog

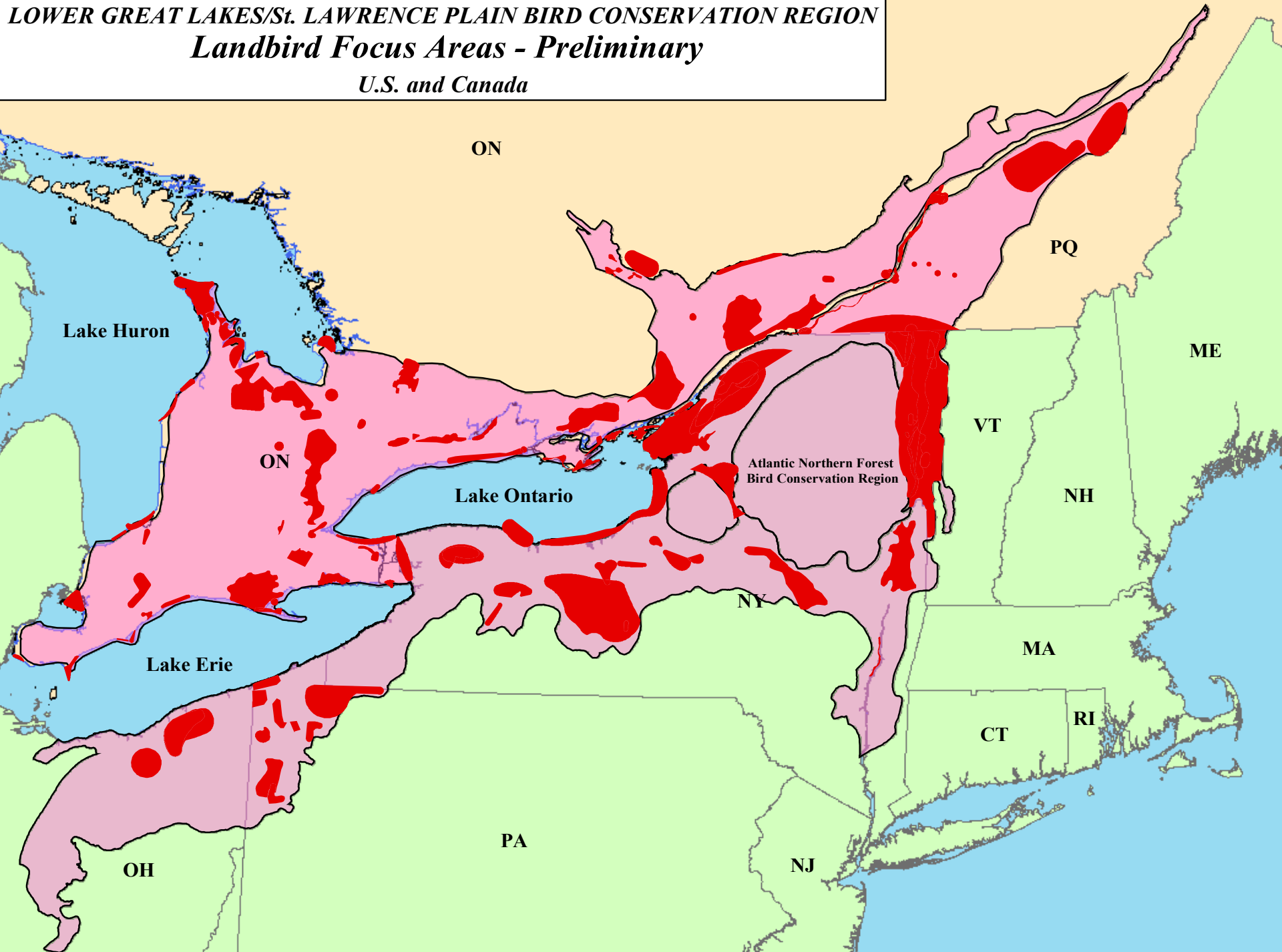
| Habitat | Tier Species | comment |
|--------------------------|--------------------------|-------------------------|
| GRASSLAND | A BOBOLINK | |
| | A HENSLOW'S SPARROW | |
| | A LOGGERHEAD SHRIKE | |
| | A SHORT-EARED OWL | |
| | A UPLAND SANDPIPER | [terrestrial shorebird] |
| | B Sedge Wren | |
| | B wintering Raptors | |
| | B Grasshopper Sparrow | |
| SHRUB-EARLY SUCCESSIONAL | A GOLDEN-WINGED WARBLER | |
| | A AMERICAN WOODCOCK | [terrestrial shorebird] |
| | A BROWN THRASHER | |
| | A WHIP-POOR-WILL | |
| | B Field Sparrow | |
| DECIDUOUS FOREST | A CERULEAN WARBLER | |
| | A RED-HEADED WOODPECKER | |
| | B Wood Thrush | |
| | B Red-shouldered Hawk | |
| | B Louisiana Waterthrush | |
| | B Yellow-shafted Flicker | |
| | B Eastern Wood-Pewee | |
| | B passerine stopover | |

| Habitat | Tier | Species | comment |
|------------------|----------|-----------------------------|---------------------------|
| Open Water | A | BALD EAGLE | winter |
| | B | Belted Kingfisher | representative of habitat |
| | B | Common Loon | [waterbird] |
| | B | Bank Swallow | |
| | B | passerine stopover | migration |
| Emergent Marsh | A | SHORT-EARED OWL | |
| | B | Northern Harrier | |
| | B | Sedge Wren | |
| | B | passerine stopover | swallows etc. |
| Mixed Forest | B | Canada Warbler | |
| | B | Northern Goshawk | |
| | B | Black-throated Blue Warbler | |
| | B | Yellow-bellied Sapsucker | |
| | B | Long-eared Owl | |
| Artificial Cover | B | Chimney Swift | |
| | B | Common Nighthawk | |
| Fen/Bog | B | Palm Warbler | |

| Habitat | Tier | Species | Current Priority? | Other Species? |
|--------------------------|------|-----------------------|-------------------------|--------------------------------|
| GRASSLAND | A | BOBOLINK | TIER II.A. | Eastern Meadowlark (II.A.) |
| | A | HENSLOW'S SPARROW | TIER I.A. | Barn Owl (IV.) |
| | A | LOGGERHEAD SHRIKE | tier IV. | |
| | A | SHORT-EARED OWL | TIER I.A. | |
| | A | UPLAND SANDPIPER | [terrestrial shorebird] | |
| | B | Sedge Wren | | |
| | B | wintering Raptors | | |
| | B | Grasshopper Sparrow | | |
| SHRUB-EARLY SUCCESSIONAL | A | GOLDEN-WINGED WARBLER | TIER I.A. | Blue-winged Warbler (I.A.) |
| | A | AMERICAN WOODCOCK | [terrestrial shorebird] | Willow Flycatcher (I.A.) |
| | A | BROWN THRASHER | | Indigo Bunting (I.A.) |
| | A | WHIP-POOR-WILL | | Prairie Warbler (I.b.) |
| | B | Field Sparrow | TIER II.A. | Eastern Towhee (I.b.) |
| DECIDUOUS FOREST | A | CERULEAN WARBLER | TIER I.A. | Yellow-throated Vireo (I.A.) |
| | A | RED-HEADED WOODPECKER | tier I.b. | Black-billed Cuckoo (II.A.) |
| | B | Wood Thrush | TIER I.A. | Baltimore Oriole (II.A.) |
| | B | Red-shouldered Hawk | tier I.b. | Rose-breasted Grosbeak (II.A.) |
| | B | Louisiana Waterthrush | tier I.b. | Acadian Flycatcher (I.b.) |
| | B | Northern Flicker | TIER II.A. | Hooded Warbler (I.b.) |
| | B | Eastern Wood-Pewee | | Red-bellied Woodpecker (I.b.) |
| | B | passerine stopover | | Prothonotary Warbler (IV.) |

| Habitat | Tier | Species | Current Priority? | Other Species? |
|------------------|------|--------------------------------|-------------------|-------------------------------|
| Open Water | A | BALD EAGLE (winter) | tier IV. | |
| | B | Belted Kingfisher | TIER II.A. | |
| | B | Common Loon | [waterbird] | |
| | B | Bank Swallow | | |
| | B | passerine stopover - migration | | |
| Emergent Marsh | A | SHORT-EARED OWL | TIER I.A. | |
| | B | Northern Harrier | TIER II.C. | |
| | B | Sedge Wren | | |
| | B | passerine stopover - swallows | | |
| Mixed Forest | B | Canada Warbler | tier I.b. | White-throated Sparrow (I.b.) |
| | B | Northern Goshawk | | Bay-breasted Warbler (I.b.) |
| | B | Black-throated Blue Warbler | | |
| | B | Yellow-bellied Sapsucker | | |
| | B | Long-eared Owl | TIER II.A. | |
| Artificial Cover | B | Chimney Swift | | Peregrine Falcon (IV.) |
| | B | Common Nighthawk | | |
| Fen/Bog | B | Palm Warbler | | Rusty Blackbird (I.b.) |

LOWER GREAT LAKES/St. LAWRENCE PLAIN BIRD CONSERVATION REGION
Landbird Focus Areas - Preliminary
U.S. and Canada



Habitat Type & Location

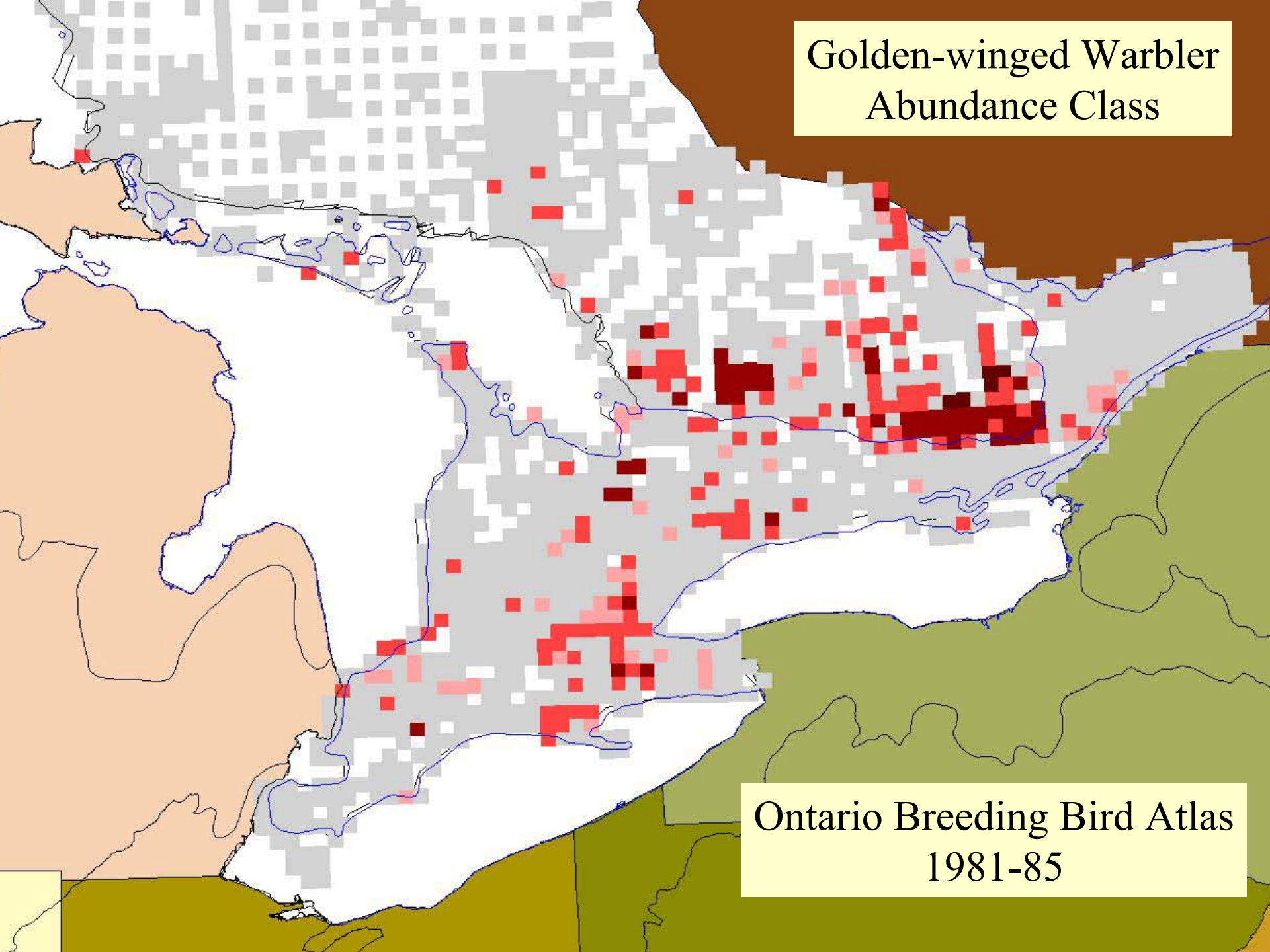
How Specific do we Need to Be?

Fine Scale
Or
Coarse Scale Approach?

Eastern Wood-Pewee Habitat Densities in BCR13 (BBC data)

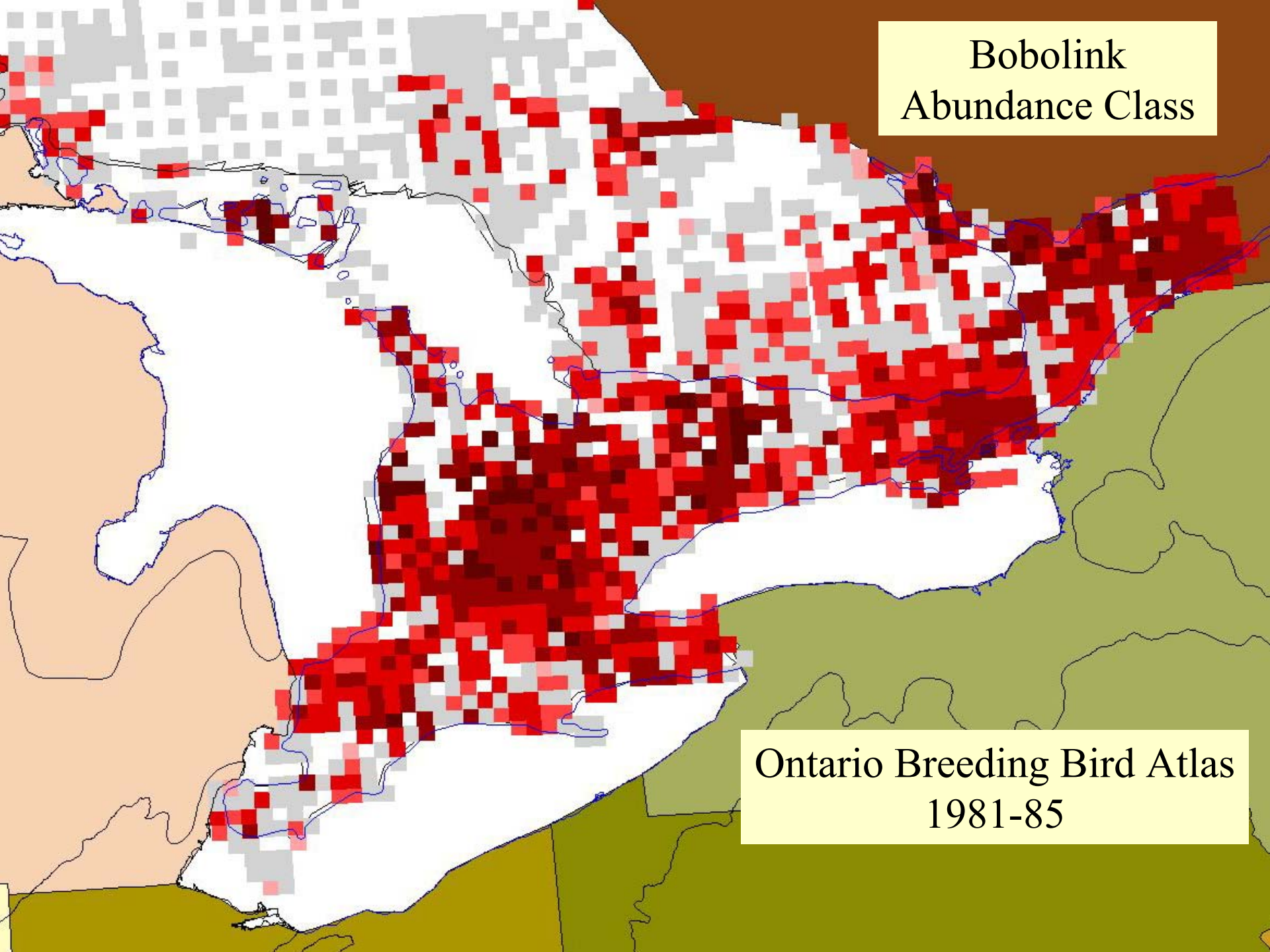
| Habitat | BBC Sites | Density (pr/km2) | % Site-years with EA WP |
|---|-----------|------------------|-------------------------|
| Mature Maple/Beech | 26 | 29.0 | 85% |
| Mature Oak | 10 | 29.0 | 87% |
| Swamp Forest | 4 | 25.6 | 88% |
| Other Deciduous | 20 | 6.3 | 42% |
| Mature Hemlock | 16 | 16.9 | 88% |
| Other Coniferous | 9 | 10.8 | 44% |
| Mature Maple/Beech & Oak & Swamp | 40 | 28.7 | 86% |

Golden-winged Warbler
Abundance Class



Ontario Breeding Bird Atlas
1981-85

Bobolink
Abundance Class



Ontario Breeding Bird Atlas
1981-85

Pros and Cons of Approaches

Fine Scale Approach using Detailed Habitat and/or site-specific Species information

- Clear Site-specific Targets for implementation
- Maximizes Target Species per Hectare
- Minimizes Habitat Required / Target Species
- Highest Short-term impact when Immediate Action needed (e.g. species at risk of extirpation)

Pros and Cons of Approaches

Coarse Scale Approach based on location of general Habitat types of interest

- Doesn't require site-specific bird data, nor detailed vegetation data
- Maximizes Umbrella Effect – protection for other species in same or similar general habitat
- High Long-term impact, accommodating change in species abundance distribution over time